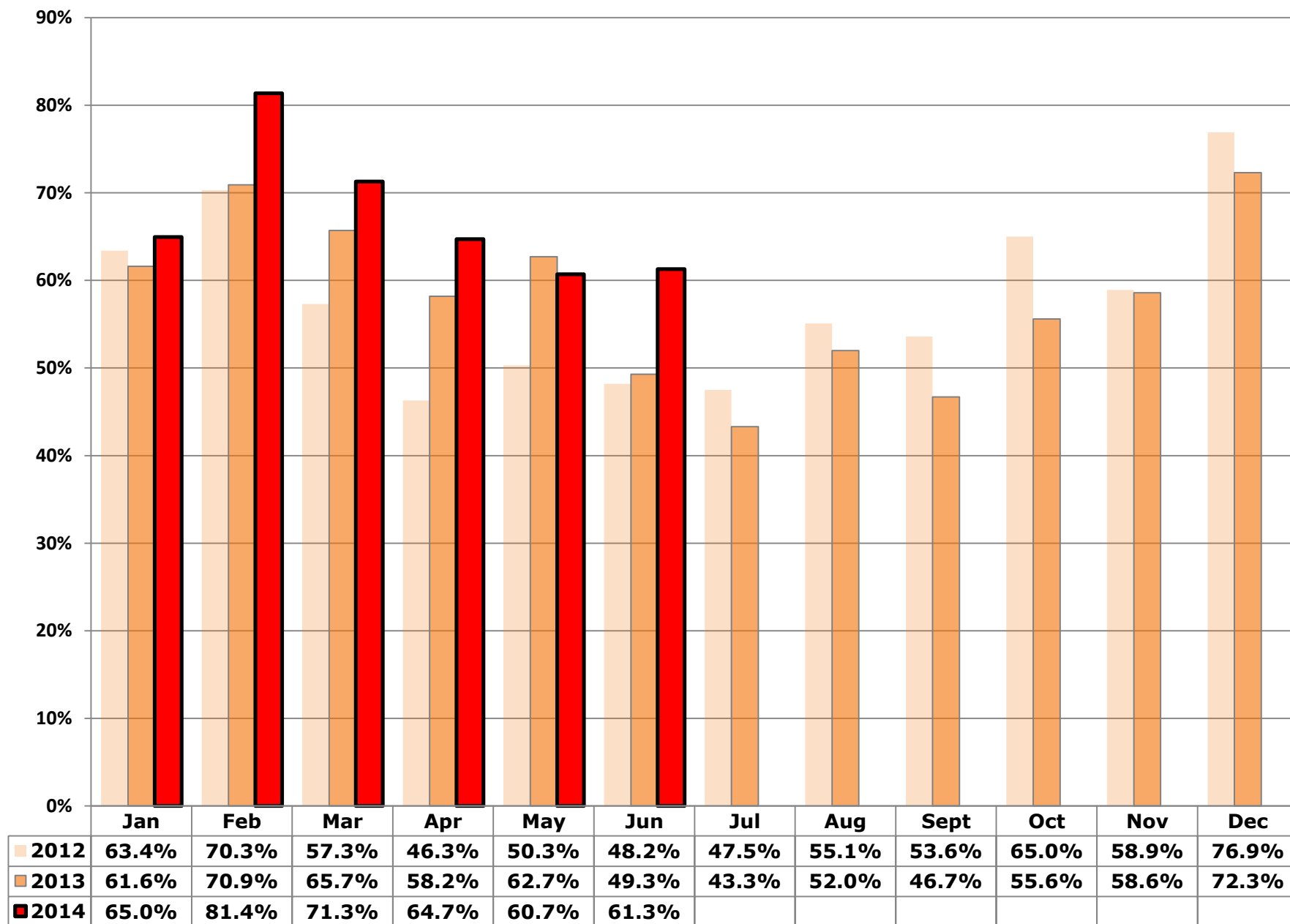


## ALUMNI - Oklahoma City Partners - Live Release Rate -- Year over Year



## ALUMNI - Oklahoma City Partners: Dashboard Summary: 2014

Indicators - 2014	Rate/000 People	Dogs (adults)	Puppies & Neonates	Cats (adults)	Kittens & Neonates	Total YTD
<b>Live Release Rate</b>		<b>62.7%</b>	<b>79.9%</b>	<b>63.7%</b>	<b>60.7%</b>	<b>66.6%</b>
Total Live Release	14.23	3,438	2,386	1,409	1,295	<b>8,528</b>
Total Intake (net Returns)	21.38	5,482	2,987	2,211	2,134	<b>12,814</b>
Total Stray Intake	13.72	3,586	1,709	1,412	1,517	<b>8,224</b>
Total Returns	0.76	246	103	78	29	<b>456</b>
Total Returned to Owner (RTO)	1.79	940	77	49	6	<b>1,072</b>
Total Adopted (net Returns)	9.20	1,878	1,793	1,015	829	<b>5,515</b>
Total Returned to Field	0.45	n/a	n/a	250	18	<b>268</b>
Transferred out of Partnership for Placement	2.79	620	516	95	442	<b>1,673</b>
Total Animals Euthanized	6.42	1,996	506	787	561	<b>3,850</b>
Targeted Spay/Neuter Surgeries	12.02	2,906	487	3,230	581	<b>7,204</b>
<i>Other Rates:</i>						
RTO Rate (as % of Stray intake)		26%	5%	3%	0%	<b>13%</b>
Adoption Rate (as % of Total Intake)		34%	60%	46%	39%	<b>43%</b>
Returned to Field Rate (% of Feline Stray Intake)		n/a	n/a	18%	1%	<b>9%</b>
Transfer to Non-Partner Rate (% of Total Intake)		11%	17%	4%	21%	<b>13%</b>
Return Rate (% of Adoptions)		12%	5%	7%	3%	<b>8%</b>
Euthanasia Rate (as % of Total Intake)		36%	17%	36%	26%	<b>30%</b>

Targeted Spay/ Neuter and TNR	Q1	Q2	Q3	Q4	Total YTD
# targeted S/N conducted on cats (other than TNR)	1,344	1,196	0	0	<b>2,540</b>
# targeted S/N conducted on kittens (other than TNR)	221	360	0	0	<b>581</b>
# targeted S/N conducted on dogs	1,280	1,626	0	0	<b>2,906</b>
# targeted S/N conducted on puppies	177	310	0	0	<b>487</b>
# Cat(s) TNR	327	363	0	0	<b>690</b>
# Kitten(s) TNR	0	0	0	0	<b>0</b>
<b>Total Spay/Neuter and TNR</b>	<b>3,349</b>	<b>3,855</b>	<b>0</b>	<b>0</b>	<b>7,204</b>

## ALUMNI - Oklahoma City Partners: Dashboard Summary: 2014

Intake and Outcomes	All CANINES				
	Q1	Q2	Q3	Q4	Total
<b>Live Release Rate</b>	<b>72.2%</b>	<b>65.4%</b>	-	-	<b>68.8%</b>
# Total Live Release	3,026	2,798	0	0	<b>5,824</b>
# Total Intake (net returns)	4,191	4,278	0	0	<b>8,469</b>
Subcategory: # of Strays	2,525	2,770	0	0	<b>5,295</b>
Subcategory: # returned within 30 days of adoption	176	173	0	0	<b>349</b>
# Intakes processed through partner transfers	216	338	0	0	<b>554</b>
# Returned-to-Owner (RTO)	516	501	0	0	<b>1,017</b>
# Adoptions (net Returns)	1,831	1,840	0	0	<b>3,671</b>
# Adoptions processed	2,007	2,013	0	0	<b>4,020</b>
# transferred to partners	240	381	0	0	<b>621</b>
# transferred out of the partnership for Placement	679	457	0	0	<b>1,136</b>
# euthanized per owner request	77	73	0	0	<b>150</b>
# euthanized other than owner request	1,046	1,306	0	0	<b>2,352</b>
# died in care	31	34	0	0	<b>65</b>
# lost in care	27	16	0	0	<b>43</b>
<i>Other Rates:</i>					
RTO Rate (as % of Stray intake)	20%	18%	-	-	<b>19%</b>
Adoption Rate (as % of Total Intake)	44%	43%	-	-	<b>43%</b>
Transfer to Non-Partner Rate (% of Total Intake)	16%	11%	-	-	<b>13%</b>
Return Rate (% of Adoptions)	9%	9%	-	-	<b>9%</b>
Euthanasia Rate (as % of Total Intake)	27%	32%	-	-	<b>30%</b>

Intake and Outcomes	All FELINES				
	Q1	Q2	Q3	Q4	Total
<b>Live Release Rate</b>	<b>72.0%</b>	<b>57.1%</b>	-	-	<b>62.2%</b>
# Total Live Release	1,076	1,628	0	0	<b>2,704</b>
# Total Intake (net returns)	1,494	2,851	0	0	<b>4,345</b>
Subcategory: # of Strays	879	2,050	0	0	<b>2,929</b>
Subcategory: # returned within 30 days of adoption	55	52	0	0	<b>107</b>
# Intakes processed through partner transfers	310	490	0	0	<b>800</b>
# Returned-to-Owner (RTO)	29	26	0	0	<b>55</b>
# Adoptions (net Returns)	747	1,097	0	0	<b>1,844</b>
# Adoptions processed	802	1,149	0	0	<b>1,951</b>
# Returned to Field	123	145	0	0	<b>268</b>
# transferred to partners	313	477	0	0	<b>790</b>
# transferred out of the partnership for Placement	177	360	0	0	<b>537</b>
# euthanized per owner request	9	11	0	0	<b>20</b>
# euthanized other than owner request	378	950	0	0	<b>1,328</b>
# died in care	35	64	0	0	<b>99</b>
# lost in care	73	24	0	0	<b>97</b>
<i>Other Rates:</i>					
RTO Rate (as % of Stray intake)	3%	1%	-	-	<b>2%</b>
Adoption Rate (as % of Total Intake)	50%	38%	-	-	<b>42%</b>
Returned to Field Rate (% of Stray Intake)	14%	7%	-	-	<b>9%</b>
Transfer to Non-Partner Rate (% of Total Intake)	12%	13%	-	-	<b>12%</b>
Return Rate (% of Adoptions)	7%	5%	-	-	<b>5%</b>
Euthanasia Rate (as % of Total Intake)	26%	34%	-	-	<b>31%</b>

## ALUMNI - Oklahoma City Partners: Dashboard Summary: 2014

Intake and Outcomes	Dogs				
	Q1	Q2	Q3	Q4	Total
<b>Live Release Rate</b>	<b>65.7%</b>	<b>59.8%</b>	-	-	<b>62.7%</b>
# Total Intake (net returns)	2,711	2,771	0	0	<b>5,482</b>
Subcategory: # of Strays	1,766	1,820	0	0	<b>3,586</b>
Subcategory: # returned within 30 days of adoption	121	125	0	0	<b>246</b>
# Intakes processed through partner transfers	141	177	0	0	<b>318</b>
# Returned-to-Owner (RTO)	467	473	0	0	<b>940</b>
# Adoptions (net Returns)	968	910	0	0	<b>1,878</b>
# Adoptions processed	1,089	1,035	0	0	<b>2,124</b>
# transferred to partners	146	233	0	0	<b>379</b>
# transferred out of the partnership for Placement	345	275	0	0	<b>620</b>
# euthanized per owner request	76	69	0	0	<b>145</b>
# euthanized other than owner request	835	1,016	0	0	<b>1,851</b>
# died in care	7	6	0	0	<b>13</b>
# lost in care	20	12	0	0	<b>32</b>
<i>Other Rates:</i>					
RTO Rate (as % of Stray intake)	26%	26%	-	-	<b>26%</b>
Adoption Rate (as % of Total Intake)	36%	33%	-	-	<b>34%</b>
Transfer to Non-Partner Rate (% of Total Intake)	13%	10%	-	-	<b>11%</b>
Return Rate (% of Adoptions)	11%	12%	-	-	<b>12%</b>
Euthanasia Rate (as % of Total Intake)	34%	39%	-	-	<b>36%</b>

Intake and Outcomes	Puppies & Neonate Canines				
	Q1	Q2	Q3	Q4	Total
<b>Live Release Rate</b>	<b>84.2%</b>	<b>75.6%</b>	-	-	<b>79.9%</b>
# Total Intake (net returns)	1,480	1,507	0	0	<b>2,987</b>
Subcategory: # of Strays	759	950	0	0	<b>1,709</b>
Subcategory: # returned within 30 days of adoption	55	48	0	0	<b>103</b>
# Intakes processed through partner transfers	75	161	0	0	<b>236</b>
# Returned-to-Owner (RTO)	49	28	0	0	<b>77</b>
# Adoptions (net Returns)	863	930	0	0	<b>1,793</b>
# Adoptions processed	918	978	0	0	<b>1,896</b>
# transferred to partners	94	148	0	0	<b>242</b>
# transferred out of the partnership for Placement	334	182	0	0	<b>516</b>
# euthanized per owner request	1	4	0	0	<b>5</b>
# euthanized other than owner request	211	290	0	0	<b>501</b>
# died in care	24	28	0	0	<b>52</b>
# lost in care	7	4	0	0	<b>11</b>
<i>Other Rates:</i>					
RTO Rate (as % of Stray intake)	6%	3%	-	-	<b>5%</b>
Adoption Rate (as % of Total Intake)	58%	62%	-	-	<b>60%</b>
Transfer to Non-Partner Rate (% of Total Intake)	23%	12%	-	-	<b>17%</b>
Return Rate (% of Adoptions)	6%	5%	-	-	<b>5%</b>
Euthanasia Rate (as % of Total Intake)	14%	20%	-	-	<b>17%</b>

## ALUMNI - Oklahoma City Partners: Dashboard Summary: 2014

Intake and Outcomes	Cats				
	Q1	Q2	Q3	Q4	Total
<b>Live Release Rate</b>	<b>62.5%</b>	<b>64.9%</b>	-	-	<b>63.7%</b>
# Total Intake (net returns)	1,080	1,131	0	0	<b>2,211</b>
Subcategory: # of Strays	655	757	0	0	<b>1,412</b>
Subcategory: # returned within 30 days of adoption	43	35	0	0	<b>78</b>
# Intakes processed through partner transfers	221	263	0	0	<b>484</b>
# Returned-to-Owner (RTO)	25	24	0	0	<b>49</b>
# Adoptions (net Returns)	486	529	0	0	<b>1,015</b>
# Adoptions processed	529	564	0	0	<b>1,093</b>
# Returned to Field	118	132	0	0	<b>250</b>
# transferred to partners	219	244	0	0	<b>463</b>
# transferred out of the partnership for Placement	46	49	0	0	<b>95</b>
# euthanized per owner request	9	10	0	0	<b>19</b>
# euthanized other than owner request	333	435	0	0	<b>768</b>
# died in care	5	6	0	0	<b>11</b>
# lost in care	69	22	0	0	<b>91</b>
<i>Other Rates:</i>					
RTO Rate (as % of Stray intake)	4%	3%	-	-	<b>3%</b>
Adoption Rate (as % of Total Intake)	45%	47%	-	-	<b>46%</b>
Returned to Field Rate (% of Stray Intake)	18%	17%	-	-	<b>18%</b>
Transfer to Non-Partner Rate (% of Total Intake)	4%	4%	-	-	<b>4%</b>
Return Rate (% of Adoptions)	8%	6%	-	-	<b>7%</b>
Euthanasia Rate (as % of Total Intake)	32%	39%	-	-	<b>36%</b>

Intake and Outcomes	Kittens & Neonate Felines				
	Q1	Q2	Q3	Q4	Total
<b>Live Release Rate</b>	<b>96.9%</b>	<b>52.0%</b>	-	-	<b>60.7%</b>
# Total Intake (net returns)	414	1,720	0	0	<b>2,134</b>
Subcategory: # of Strays	224	1,293	0	0	<b>1,517</b>
Subcategory: # returned within 30 days of adoption	12	17	0	0	<b>29</b>
# Intakes processed through partner transfers	89	227	0	0	<b>316</b>
# Returned-to-Owner (RTO)	4	2	0	0	<b>6</b>
# Adoptions (net Returns)	261	568	0	0	<b>829</b>
# Adoptions processed	273	585	0	0	<b>858</b>
# Returned to Field	5	13	0	0	<b>18</b>
# transferred to partners	94	233	0	0	<b>327</b>
# transferred out of the partnership for Placement	131	311	0	0	<b>442</b>
# euthanized per owner request	0	1	0	0	<b>1</b>
# euthanized other than owner request	45	515	0	0	<b>560</b>
# died in care	30	58	0	0	<b>88</b>
# lost in care	4	2	0	0	<b>6</b>
<i>Other Rates:</i>					
RTO Rate (as % of Stray intake)	2%	0%	-	-	<b>0%</b>
Adoption Rate (as % of Total Intake)	63%	33%	-	-	<b>39%</b>
Returned to Field Rate (% of Stray Intake)	2%	1%	-	-	<b>1%</b>
Transfer to Non-Partner Rate (% of Total Intake)	32%	18%	-	-	<b>21%</b>
Return Rate (% of Adoptions)	4%	3%	-	-	<b>3%</b>
Euthanasia Rate (as % of Total Intake)	11%	30%	-	-	<b>26%</b>

## ASPCA: 2014 Animal Stats Dashboard -- Definitions

Key Indicators	
<b>Live Release Rate</b>	Rate calculation = Total Live Release count divided by Total Intake
<b>Total Live Release</b>	Community/Partnership total live release: sum of (animals returned to owner, adopted (net of returns), Released to Field (felines), or transferred outside the partner organizations to agencies that guarantee adoption of the animals transferred to them) minus animals returned within 30 days of adoption.  Partner agency live release: sum of (animals returned to owner, adopted, transferred to any agency that guarantees placement) minus # animals returned within 30 days of adoption date from that agency.
<b>Total Intake</b>	Community/Partnership total intake: sum of animals entering all partner agencies from non-partner sources (i.e., excludes number transferred between Dashboard-reporting partners), minus animals returned within 30 days of adoption from one of the reporting partners. Partner agency total intake: sum of animals entering shelter from all sources (including intake/transfers from dashboard-reporting partners) minus animals returned within 30 days of adoption.
<b>Euthanasia</b>	The total number of animals in partner facility(s) that were euthanized for all reasons (including Owner Request).
<b>Targeted Spay/Neuter</b>	The total number of animals altered through no or low-cost spay/neuter services or a TNR program. Targeted includes: <ul style="list-style-type: none"> <li>• Low-income by actual level or entitlement qualification OR</li> <li>• Low-income / high-risk by location of residence OR</li> <li>• Unlikely to have been altered in the absence of low-cost program OR</li> <li>• Impounded one or more times as a stray OR</li> <li>• Feral or free-roaming animal</li> </ul> Note: It does not include shelter animals (partner shelters, non-partner shelters, rescue groups, etc) altered before adoption.
Other "Rates" (appear on various reports and used to track trend of Outcomes over time)	
<b>Adoption Rate</b>	# Adoptions (net returns within 30 days)/Total Intake
<b>RTO Rate</b>	# Return to Owner/Stray Intake
<b>Returned to Field Rate</b>	# Returned to Field/Total Feline Stray Intake
<b>Transferred to Non-Partners Rate</b>	# Transferred to a Non-Partner/Total Intake
<b>Returns 30 rate</b>	# Returns in 30 days/# Adoptions Processed
<b>Euthanasia rate</b>	# Euthanized/Total Intake
<b>Rate per 000 (as seen only on the quarterly Dashboard Summary report)</b>	On the quarterly Dashboard Summary Report only: this rate is calculated by dividing the total count value by population. The result is the rate per thousand people. Human population is shown on the Community Descriptors page of that report.
Animal categories	
<b>Dogs</b>	Canines over 5 months of age.
<b>Puppies</b>	Canines 6 weeks up to and including 5 months of age.
<b>Canine neonates</b>	Canines less than 6 weeks old.
<b>Cats</b>	Felines over 5 months of age.
<b>Kittens</b>	Felines 6 weeks up to and including 5 months of age.
<b>Feline neonates</b>	Felines less than 6 weeks old.
Intake Terms	
<b>Intake – all sources</b>	Grand total of all live animal intake from all sources (categories below). Does not include any animals dead on arrival at the shelter (DOA). NOTE: does not include any animals returning to the shelter location from a foster home. For the Dashboard, these are location changes, not new intake.
Sub-categories (that must total 'all sources' when summed)	
<b>Owner Surrender</b>	Animals relinquished by owner for any reason (including Request for Euthanasia)
<b>Stray</b>	Animals picked up in field or brought to shelter (by anyone) who have no known owner.
<b>Transfer from non-partner agencies</b>	Animals transferred from agencies that are not "Dashboard-reporting" partners.
<b>Transfer from partner</b>	Animals transferred from a "Dashboard-reporting" partner.
<b>Returns within 30 Days</b>	Animals returned to shelter within 30 days of being adopted from that agency.
<b>Other</b>	Animals born in care or from a source not listed above (including Court ordered impounds).

**ASPCA: 2014 Animal Stats Dashboard -- Definitions**

Outcome Terms	
<b>Return to owner (RTO)</b>	Animals included in shelter Intake count (current or prior reporting period) who are successfully reunited with their owners (i.e. reclaimed from shelter).
<b>Adoption</b>	Final adoptions only. Does not include animals placed in foster care, on overnight 'trial' stays, or on hold at shelter prior to completion of adoption agreement.
<b>Return to Field</b>	Stray felines included in shelter Intake (current or a prior month), altered and returned to stray capture location as free-roaming felines.
<b>Transfer - partners</b>	Animals sent to other agencies or organizations that are "Dashboard-reporting" partners.
<b>Transfer – non-partners</b>	Animals transferred to agencies that guarantee placement and are not "Dashboard-reporting" partners .
<b>Euth – owner-requested</b>	Narrow category that should only include animals that were brought to the facility specifically for a low cost euthanasia option. Animals relinquished for adoption that are deemed "unadoptable" by the partner agency should not be included here.
<b>Euth – all other [reasons]</b>	Animals euthanized for all reasons EXCEPT owner-requested.
<b>Died in care</b>	Animals in the agency's care that die (cause is NOT euthanasia) during their stay (in shelter or foster).
<b>Lost in Care</b>	Animals lost while in agency's care (e.g., escape from foster home).
Targeted Spay/Neuter terms	
<b>Targeted S/N [by animal type, other than TNR]</b>	Only S/N conducted on <u>owned</u> animals. Does not include shelter animals (or from partner shelters, non-partner shelters, rescue groups, etc) altered before adoption, or cats or kittens altered through a TNR program.
<b>TNR (Trap, Neuter, Release)</b>	Surgery count for stray,feral and/or free-roaming felines returned to a colony or other source location post-surgery. Does not include owned animals or shelter cats or kittens who will not be returned to a colony. It DOES include felines taken into the Shelter, counted as intake and then altered and Released to the Field.
Capacity related terms	
<b>Number of Permanent cages</b>	This number only includes cages that are permanent in the facility. Do not include cage banks that are wheeled out to handle overflow or condos that are set up throughout the facility.
<b>Number of Group Housing Units</b>	Some facilities have designed colony housing for cats, or dog suites designed to house more than one animal at a time. List the number of these units available, and the number of animals each were designed to hold. Note: "T" or Guillotine style dog kennels should be counted as one kennel run.
<b>Dog shelter capacity (#)</b>	The number of permanent cages for dogs (each counted as Capacity =1).
<b>Cat shelter capacity (#)</b>	The number of permanent cages (each counted as 1) + (the number of group housing units X the number of animals each is designed to hold).
<b># of active foster homes</b>	Number of foster homes with at least one animal in them on the last day of the month. Offsite adoption locations such as PetSmart should also be counted as foster homes - each cage space counts as one foster home.
<b>End actual – in shelter</b>	The number of animals by report group (e.g., dogs, puppies, cats, kittens) in shelter (excluding those animals in foster care) on the last day of the reporting month.
<b>End actual – in foster</b>	Number of animals in foster care/homes on the last day of the reporting month.
<b>End actual - total</b>	Reported total end in care (at shelter plus in foster) on last day of reporting period.
<b>Calculated end count</b>	Calculated end in care number starting with last month's reported end in care number plus Intake, minus all final outcome status animals (return to owner, adopted, released to field, transferred, euthanized, died in care, lost in care)
<b>Difference</b>	The difference between the reported total end count and the calculated end count. Calculation: prior months' end count (as reported), plus current month intake, minus current month outcomes. Any "difference" number not equal to zero means there is an error in one or more of the intake/outcome numbers or an end count(s).
<b>Shelter dogs as % capacity</b>	The Total Dog adult equivalent in shelter divided by the dog shelter capacity #
<b>Shelter cats as % capacity</b>	The Total Feline adult equivalent in shelter divided by the feline shelter capacity#
<b>Foster as % capacity</b>	Total animals reported as "in foster" divided by # of active foster homes
<b>Dog adult equivalent in shelter</b>	# dogs + (# puppies/2.5) For example: 2 dogs and 3 puppies would be equal to 2+(3/2.5) = 3.2 dog adult equivalents.
<b>Cat adult equivalent in shelter</b>	# cats + (# kittens/2.5) For example: 2 cats and 3 kittens would be equal to 2+(3/2.5) = 3.2 cat adult equivalents
<b>Total adult equivalent in foster</b>	2 dogs + 2 cats = 4 adults. 3 puppies + 3 kittens = 6 juveniles/2.5 = 2.4 adult equivalent. Total adult equivalent: 4 + 2.4 = 6.4 adults equivalents in foster homes at month end.

<b>Community Descriptors (1)</b>	Mayor's Alliance, NYC, NY	Hillsborough County, FL (Tampa)	Spokane County, WA	Travis County, TX (Austin)	Charleston County, SC	Oklahoma City, OK	Buncombe County, NC	Cleveland City, OH	Shelby County, AL	Sacramento County, CA	Miami-Dade County, FL	Jefferson County, KY (Louisville)	Bernalillo Cty, NM (ABQ)	Mecklenburg Cty, NC (Charlotte)
<b>clockstart</b>	2003	May-07	Aug-07	Jan-07	Apr-08	July-08	July-08	July-08	July-09	July-09	January-11	January-13	January-14	January-14
<b>Human Population 2010 (a)</b>														
Total population, in thousands (2010 Census, 2012 1-Year Estimates)	8,337	1,278	476	1,096	365	599	244	391	201	1,450	2,591	751	673	969
2018/2013 growth (cumulative, not annual rate)	5%	6%	3%	7%	5%	5%	3%	2%	4%	4%	6%	3%	4%	6%
Percent of population that is urban	100%	97%	86%	95%	89%	93%	76%	100%	77%	98%	100%	99%	96%	99%
Percent of population 18 and over in poverty	19%	17%	15%	16%	15%	16%	16%	31%	7%	17%	18%	15%	16%	14%
Percent of population (civilian non-institutionalized) with no health	14%	19%	13%	19%	18%	21%	18%	17%	10%	16%	29%	13%	16%	17%
Number of Households, in thousands	3,086	477	189	414	144	229	99	163	75	517	839	308	265	366
Median household income	\$ 50,895	\$ 46,515	\$ 47,624	\$ 57,368	\$ 48,593	\$ 43,352	\$ 43,294	\$ 24,257	\$ 65,728	\$ 52,667	\$ 41,400	\$ 45,869	\$ 46,190	\$ 55,295
White Population, in thousands	3,647	927	423	850	244	405	217	150	163	863	1,967	551	462	558
White Population in percent (c)	44%	73%	89%	78%	67%	68%	89%	38%	81%	59%	76%	73%	69%	58%
Black or African American Population, in thousands	2,059	213	9	92	105	85	15	211	22	146	488	156	20	298
Black or African American Population in percent (c)	25%	17%	2%	8%	29%	14%	6%	54%	11%	10%	19%	21%	3%	31%
Asian Population, in thousands	1,091	44	12	64	5	25	2	7	4	217	42	18	15	48
Asian Population in percent (c)	13%	3%	2%	6%	1%	4%	1%	2%	2%	15%	2%	2%	2%	5%
Hispanic Population, in thousands	2,407	327	23	371	19	105	15	42	12	320	1,667	35	326	121
Hispanic Population in percent (c)	29%	26%	5%	34%	5%	17%	6%	11%	6%	22%	64%	5%	48%	13%
Percent of population that speaks English less than "very well"	23%	10%	3%	13%	3%	10%	N	5%	N	14%	34%	4%	8%	8%
Rental Households, in thousands	2,108	200	70	201	58	95	35	96	17	227	383	119	99	153
Rental Households as percent of total	68%	42%	37%	49%	41%	41%	35%	59%	23%	44%	46%	39%	37%	42%
Percent of households with no vehicles	57%	7%	8%	6%	8%	7%	7%	27%	3%	8%	12%	10%	7%	7%
<b>Animal Population (b)</b>														
Percent of households with dogs	29.0%	35.7%	36.3%	44.0%	38.6%	43.2%	40.3%	36.6%	44.1%	32.8%	35.7%	45.9%	46.0%	40.3%
Average number of dogs per household	1.4	1.5	1.7	1.8	1.8	2.1	1.7	1.6	1.7	1.6	1.5	1.9	2.0	1.7
Estimated number of owned dogs, in thousands	1,253	256	117	328	100	207	68	95	56	271	449	268	244	251
Percentage of households with cats	29.1%	27.3%	39.0%	28.3%	27.8%	32.6%	29.5%	33.3%	27.4%	28.3%	27.3%	36.8%	32.0%	29.5%
Average number of cats per household	1.9	2.1	1.8	2.2	2.1	2.2	2.0	2.4	2.5	1.9	2.1	2.1	2.2	2.0
Estimated number of owned cats, in thousands	1,706	274	133	258	84	164	58	130	51	278	481	238	186	216
Estimated number of owned animals, in thousands	2,959	529	249	586	184	371	126	225	108	549	930	506	430	467
Estimated number of free-roaming cats in thousands (d)	1,333	206	82	179	62	99	43	70	32	223	362	133	114	158
Estimated total number of animals, in thousands	4,292	735	331	765	246	470	169	296	140	772	1,292	639	544	625
Estimated number of owned animals in poverty, in thousands	547	89	37	93	28	61	20	70	8	94	171	78	69	65

**Notes:**

- 1 Sources: US Census Bureau American FactFinder, 2012 American Community Survey 1 Year Estimates, AVMA US Pet Ownership & Demographics Sourcebook, 2012 Edition (animal population)
- a. [Source: US Census Bureau, American FactFinder: http://factfinder2.census.gov/faces/nav/jsf/pages/searchresults.xhtml?ref=geo&refresh=t](http://factfinder2.census.gov/faces/nav/jsf/pages/searchresults.xhtml?ref=geo&refresh=t)
- b. Source: 2012 U.S. Pet Ownership & Demographics Sourcebook (per AVMA website, published every 5 years) (based on US Census Bureau: 2010 Current Population Survey), Tables 1-8 & 1-13.
- c. Ethnicities do not add to 100% because Hispanic can include White and Black. Also, white and black are people reporting one race only.
- d. 12% of households feed 3.6 cats each (Levy, J, Woods, J, Turick, S; & Etheridge, D. "Number of Free-roaming Cats in a College Community in the Southern United States and Characteristics of Community Residents who Feed Them." *J Am Vet Med Assoc* 2003; 223(2): 202-205)